

**CAN YOU DO IT?**

**WHY NOT?**

26FW  
Catalog



The contents of this catalog are proprietary and intended solely for the use of DAEWON and its customers.

No part of this catalogue may be disclosed or redistributed to any third party without the prior consent of DAEWON.

To our valued customers,

Daewon, is an eco-friendly company that specializes in manufacturing Polyurethane Synthetic Leather.

With our highly skilled development and production team, Daewon has been actively involved in the protection of environment through the ISO 14001 Environmental Management system and research for technology used in refining waste DMF.

Our synthetics are currently used for wide variety of products, such as Footwear, Gloves, Motor, IT, etc.

We continued to strive for development to proudly manufacture our product as water-base Synthetics.

As our company motto states, Daewon is always striving for continuous Inspiration and Innovation.

Our team is always willing to support and cooperate with our customers to find the best item that is suitable for them.

We thank you for taking your time to look through our catalogue.

Please don't hesitate to contact us for any inquiries or details you wish to visit.

Thank you & Best Regards,



# TABLE OF CONTENTS

## Mother Nature

- DOLCE SR+
- ARU SUEDE
- ELAN CL
- ELAN HA
- ELAN HA+
- ELAN HA PRO
- ELAN TR-II
- BOUNCE FORM
- SLIP

## New Release Paper

## Collab.

- 2 LAYER ITEM

## ECO Suede

- LETO
- SNOW
- LETO MF
- SNOW MF
- FULLEN

## PU Skin. TPU

- ELAN 2S, ELAN 3S
- VEIL SKIN LITE HMF
- VEIL SKIN BUCK HMF
- TRISHA

## PU Synthetic

- Q-NIX
- FREESIA
- TREE VEGAN RC
- NEW LITE, MATE



# MOTHER NATURE

**DAEWON**



# FW2026 Collection



## DOLCE SR+ 1.0MM

TEAR STRENGTH		TENSILE STRENGTH		MARTINDALE ABRASION	MIGRATION FASTNESS	CEMENTATION TEST
A	B	A	B			
38.0	35.0	140.0	127.0	MIN 50000 cycles	4	3.6-4.0



## DOLCE SR+



COMP : R-Polyester 88 %,Poly Urethane 12 %

SPEC : 1.0mm

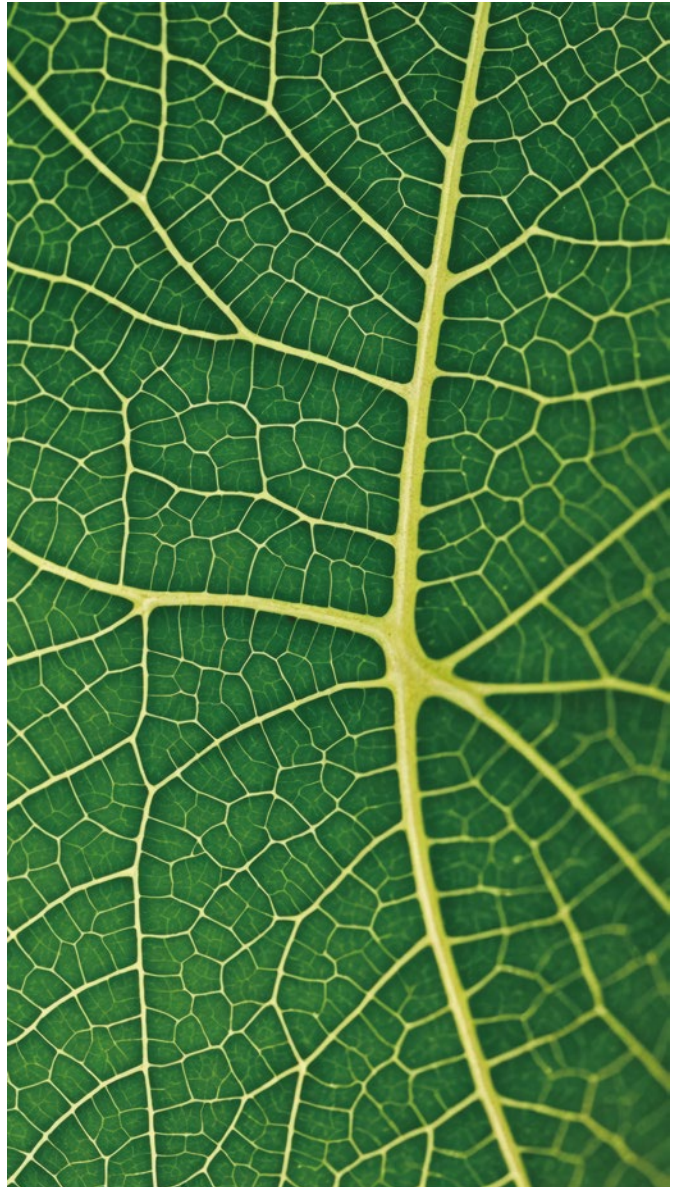
WEIGHT: 429.40g/sqmt

Available Thickness: 0.8mm, 1.0mm, 1.2mm

- Dolce", to be soft and smooth.
- Real Suede leather feel.
- High durability with extra soft touch.



# FW2026 Collection



## ARU SUEDE 1.2MM

TEAR STRENGTH		TENSILE STRENGTH		MARTINDALE ABRASION	MIGRATION FASTNESS	CEMENTATION TEST
A	B	A	B			
35.0	35.0	145.0	130.0	MIN 50000 cycles	4	3.8-4.0



# ARU SUEDE



COMP : 77% PES, 23% PU

SPEC : 1.2mm

WEIGHT: 337.23g/sqmt

Available Thickness: 0.8mm, 1.0mm, 1.2mm

- Real Suede leather feel that can also be applied for HF press.
- High definition with HF Press with soft touch feel.

# FW2026 Collection

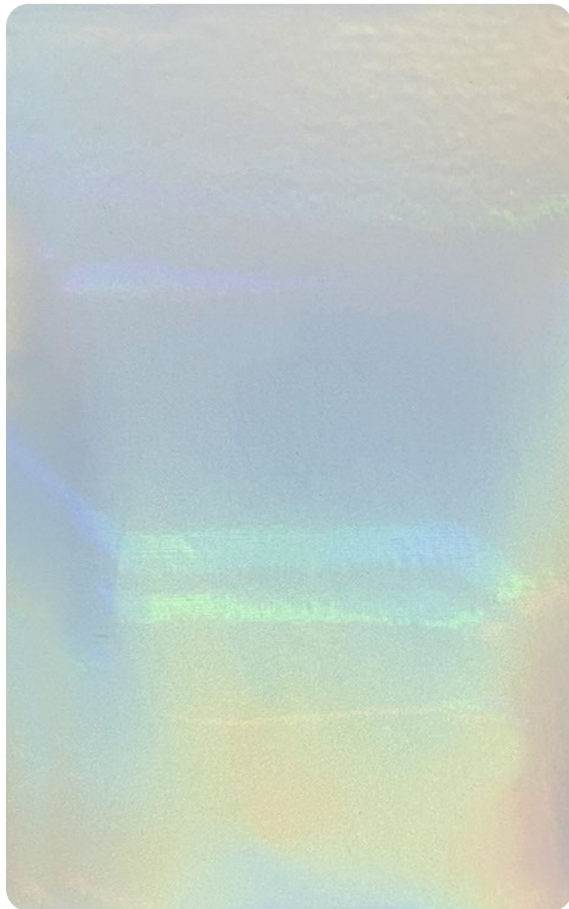


## ELAN 2S CL 0.3MM

TEAR STRENGTH		TENSILE STRENGTH		MARTINDALE ABRASION	MIGRATION FASTNESS	CEMENTATION TEST
A	B	A	B			
25.0	24.0	59.0	48.0	1300 cycles	4-5	3.7



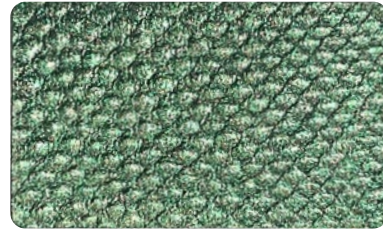
# NEW FINISH CL "CHAMELEON"



RAINBOW / CL-51



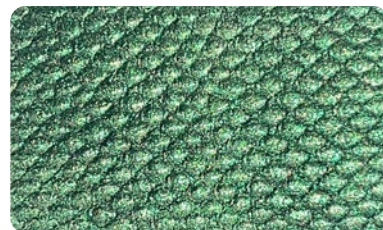
MADAGASCAR / CL-07



MADAGASCAR / CL-67



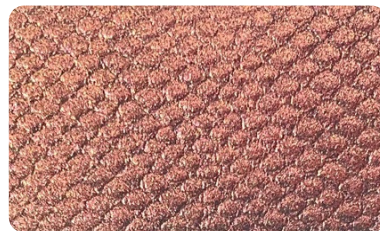
MADAGASCAR / CL-79



MADAGASCAR / CL-679



MADAGASCAR / CL-06



MADAGASCAR / CL-10



MADAGASCAR / CL-09

COMP : 40% PU, 60% HMF

SPEC : 0.3mm

WEIGHT: 369.60g/sqmt

- Like the color changing skin of a Chameleon, 8 Color shifts.
- Can apply to variety of PU Skin, TPU, PU Syn with variety of thickness.

# FW2026 Collection



## ELAN 2S HA 0.3MM

TEAR STRENGTH		TENSILE STRENGTH		MARTINDALE ABRASION	MIGRATION FASTNESS	CEMENTATION TEST
A	B	A	B			
24.0	23.0	59.0	50.0	1500 cycles	4-5	3.7

## ELAN 2S HA PLUS 0.3MM

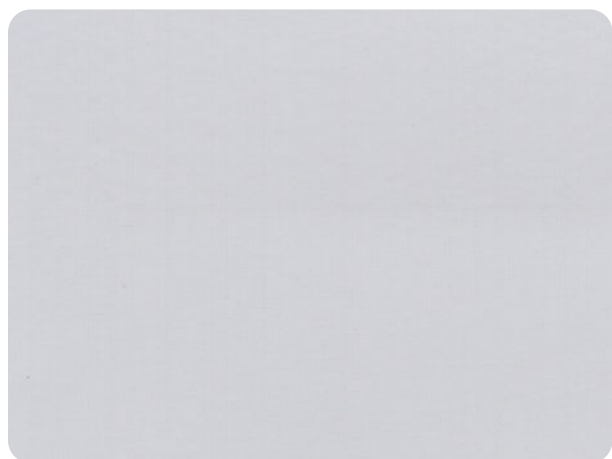
TEAR STRENGTH		TENSILE STRENGTH		MARTINDALE ABRASION	MIGRATION FASTNESS	CEMENTATION TEST
A	B	A	B			
24.0	23.0	57.0	50.0	1700 cycles	4-5	3.8

## ELAN 2S HA PRO 0.3MM

TEAR STRENGTH		TENSILE STRENGTH		MARTINDALE ABRASION	MIGRATION FASTNESS	CEMENTATION TEST
A	B	A	B			
26.0	24.0	60.0	51.0	2000 cycles	4-5	3.9



## ELAN 2S HA



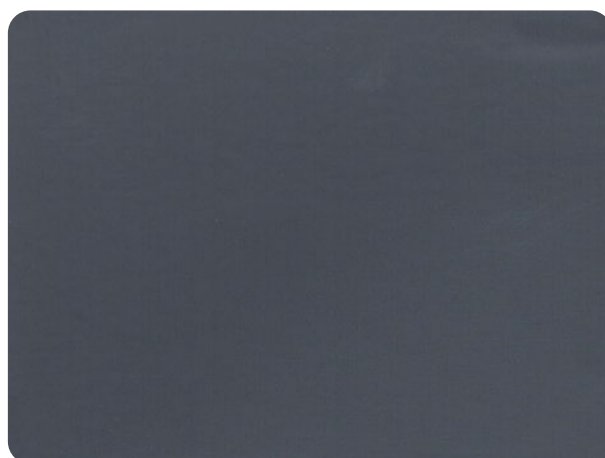
UMT

## ELAN 2S HA PLUS



UMT

## ELAN 2S HA PRO



UMT

COMP : 40% PU, 60% HMF

SPEC : 0.3mm

WEIGHT: 359.90g/sqmt

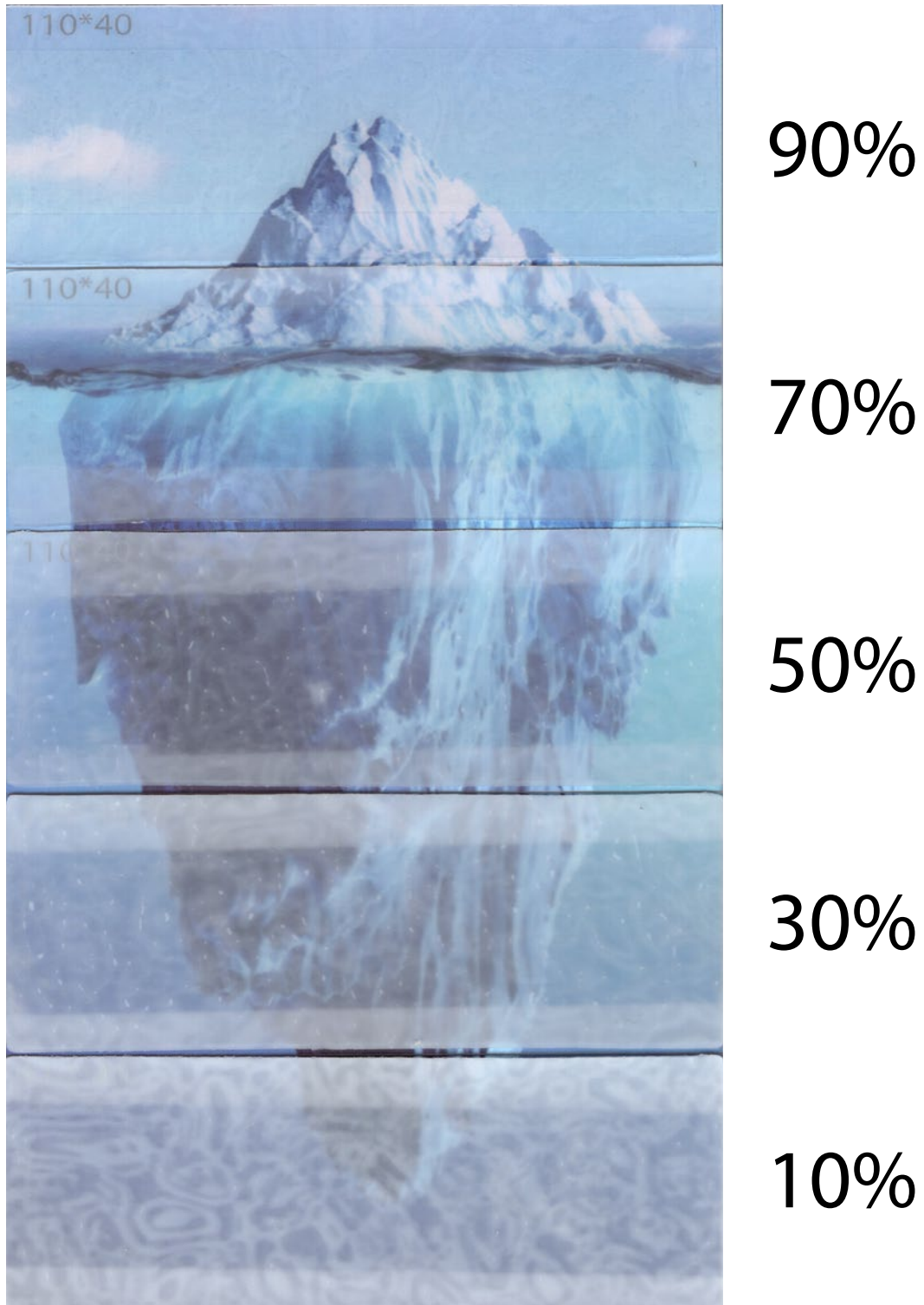
- HA: High Abrasion Level 1.
- HA PLUS: High Abrasion Level 2.
- HA PRO: High Abrasion Level 3.
- Can apply to variety of PU Skin, TPU, PU Syn with variety of thickness



# FW2026 Collection



# ELAN 2S TR-II



PAUA



# FW2026 Collection



## BOUNCE FORM 3.4MM

TEAR STRENGTH		TENSILE STRENGTH		MARTINDALE ABRASION	MIGRATION FASTNESS	CEMENTATION TEST
A	B	A	B			
70.0	72.0	138.0	131.0	MIN 50000 cycles	4-5	0.6

**DAEWON**



# BOUNCE FORM



AR-100M

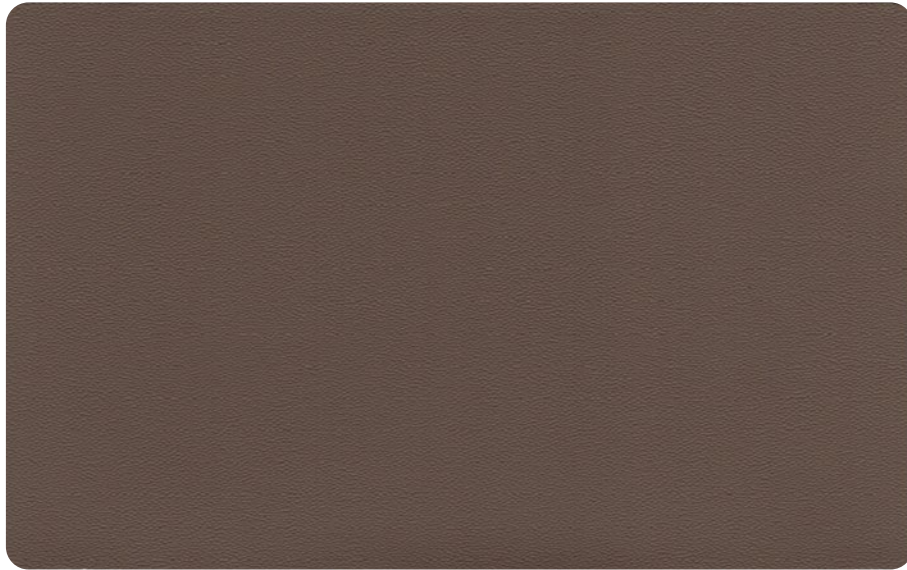
COMP : 45.0% PE, 37.0% PET-REC, 18.0% PU

SPEC : 3.4mm

WEIGHT: 602g/sqmt

- Foam with PU surface.
- High Definition after High Frequency Press.

## SLIP 1.0MM



R-8



R-8

COMP : 40% PU , 60% Polyester

SPEC : 1.0mm

WEIGHT: 502g/sqmt

- PU surface with suede soft-feel back.
- Ideal to use for components with direct touch with skin.

## SLIP 1.0MM

TEAR STRENGTH		TENSILE STRENGTH		MARTINDALE ABRASION	MIGRATION FASTNESS	CEMENTATION TEST
A	B	A	B			
29.0	38.0	194.0	181.0	MIN 50000 cycles	4-5	3.8



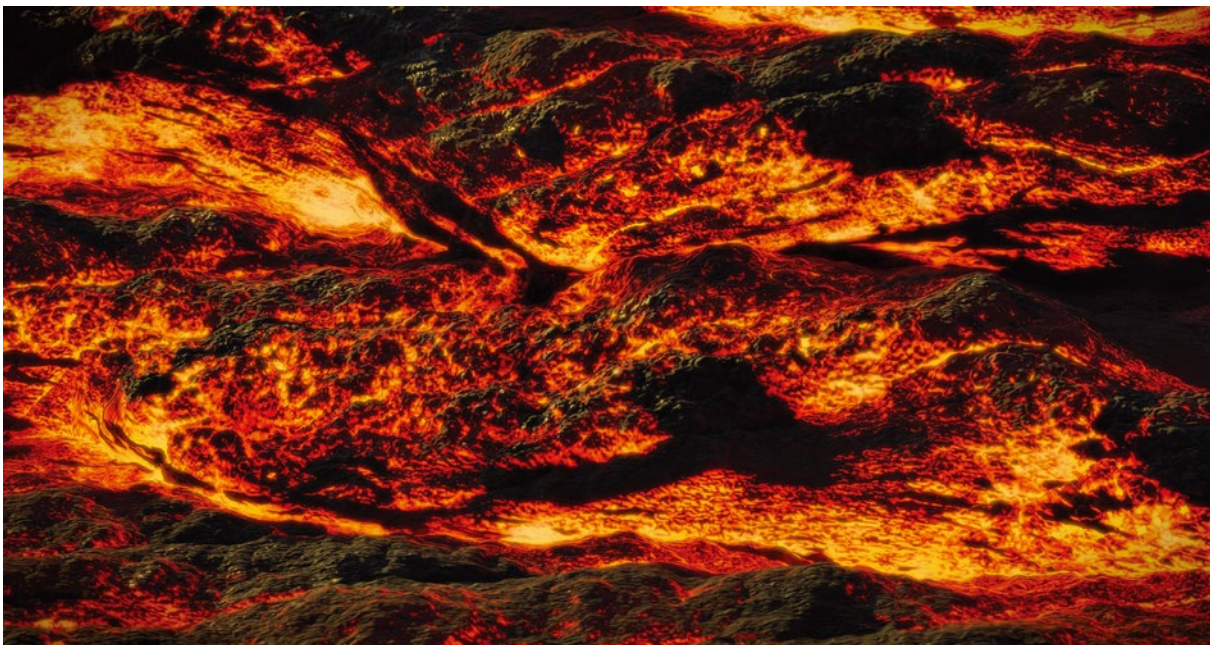
The background of the entire page is a vibrant teal color with a complex, wavy, and textured pattern that resembles a close-up of a fan or a series of overlapping, curved lines. The pattern is dense and creates a sense of depth and movement.

# NEW RELEASE PAPER

DAEWON



# FW2026 Collection





# NEW RP



Y2061



Y624



# FW2026 Collection

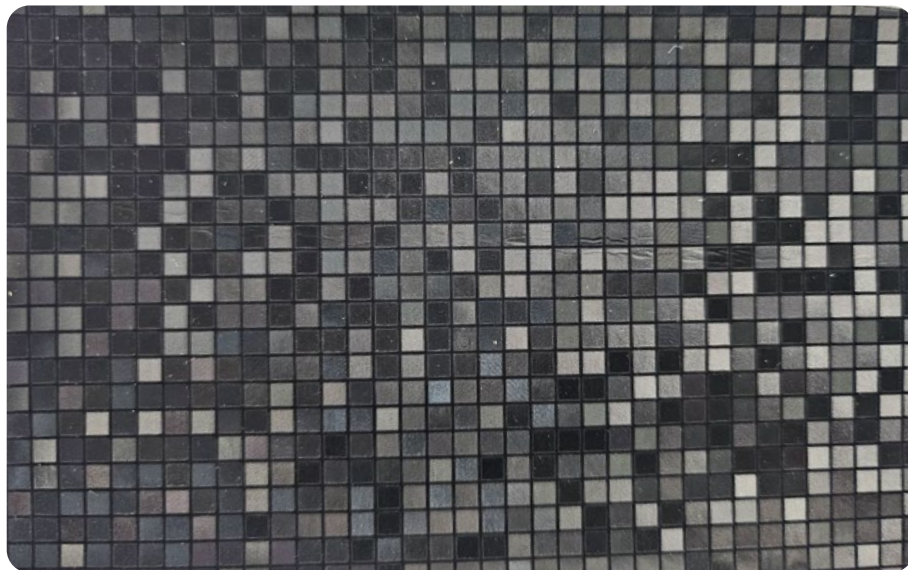




# NEW RP



Y6037



Y2065

# FW2026 Collection

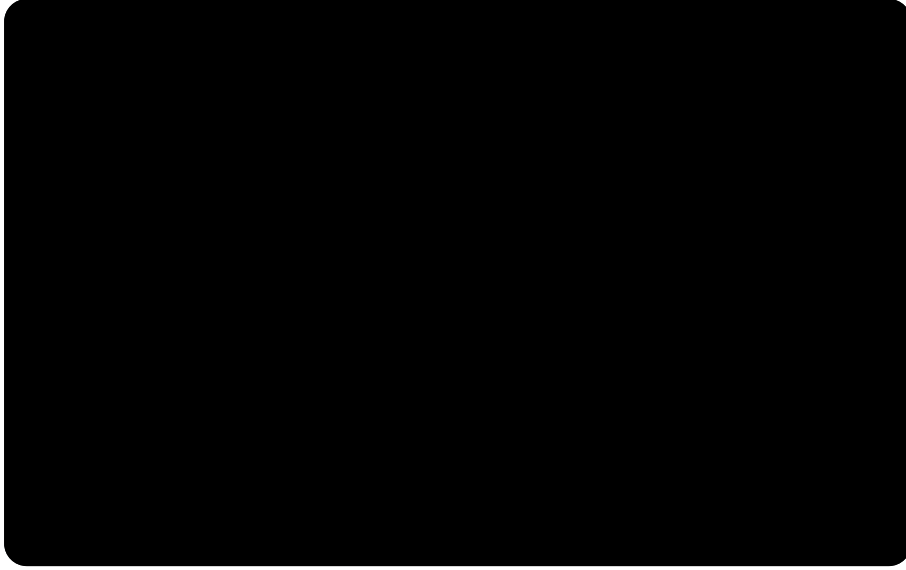


**DAEWON**

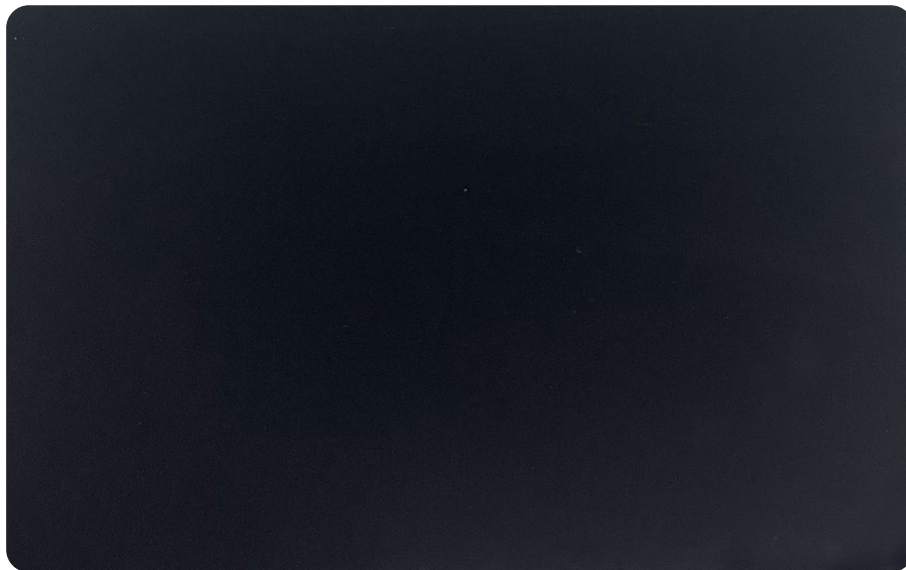




# NEW RP

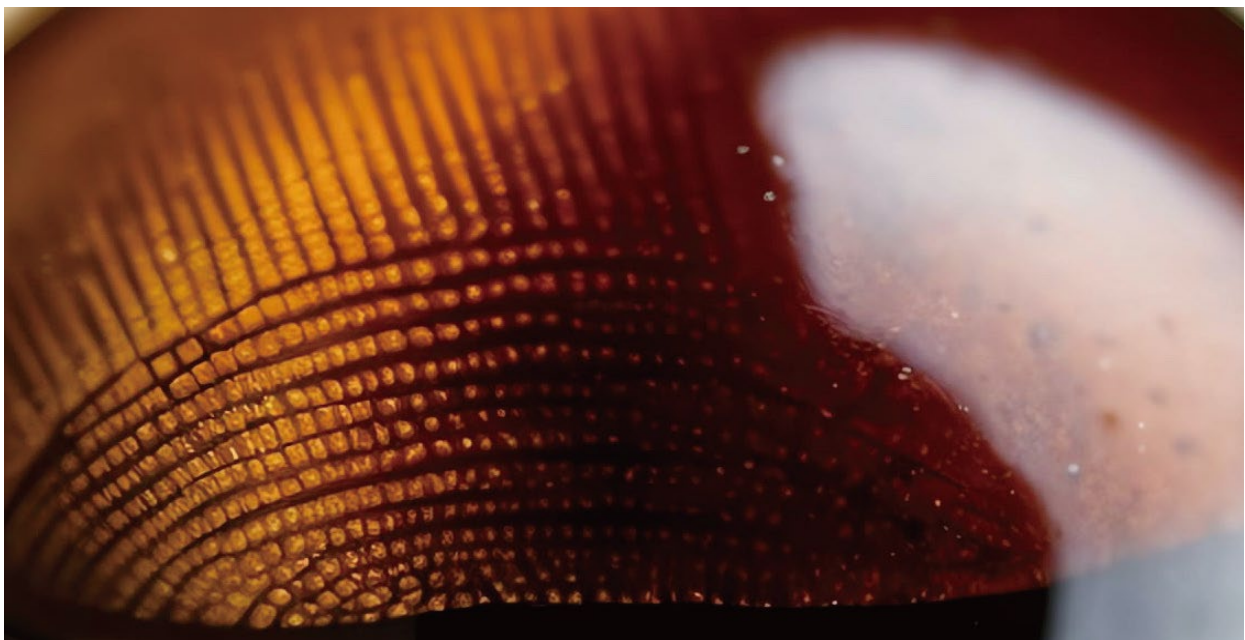
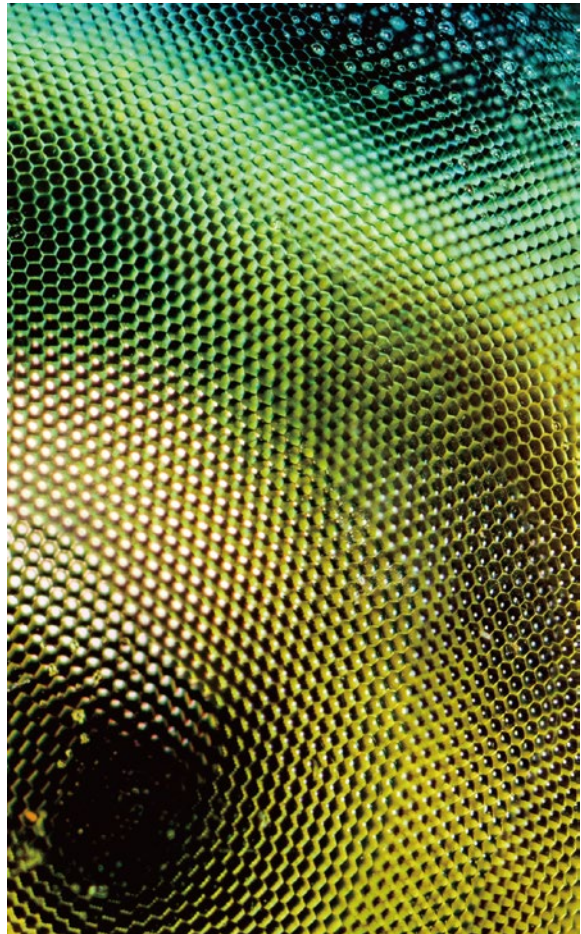
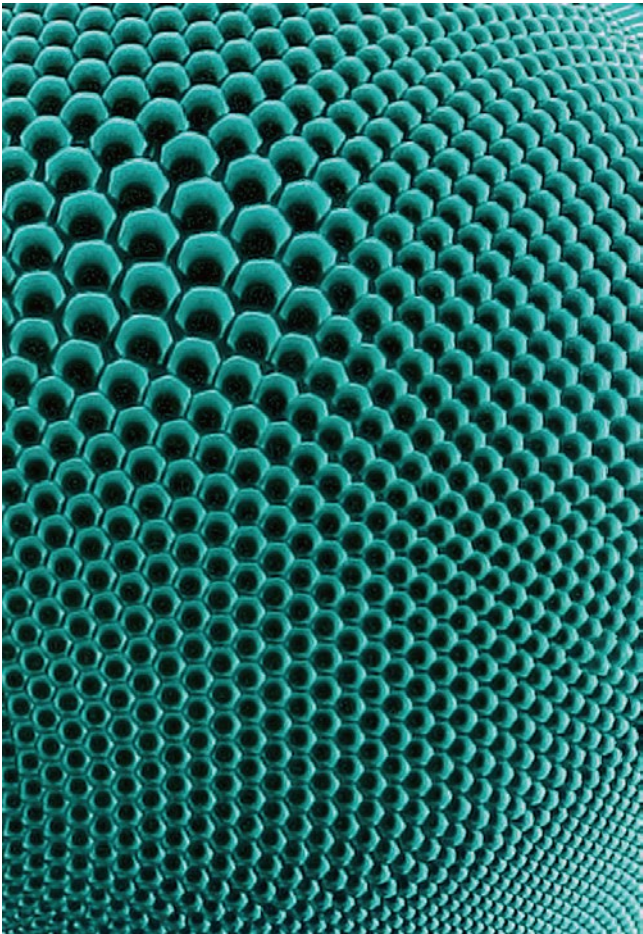


Y2062



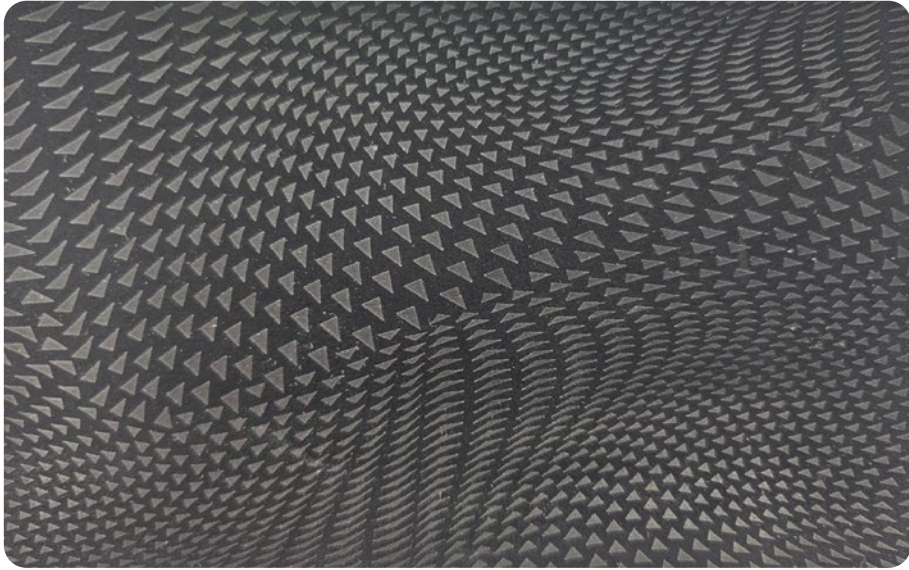
Y2062

# FW2026 Collection





# NEW RP



Y6026



Y2069

# FW2026 Collection



**DAEWON**



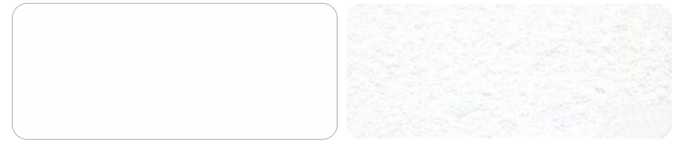


# NEW BACKER PALETTE

for Synthetic leather



DW-BLACK



DW-WHITE



DW-GREY



DW-RED



DW-NAVY BLUE



DW-ROYAL BLUE



DW-LIGHT BLUE



DW-GREEN



DW-VOLT



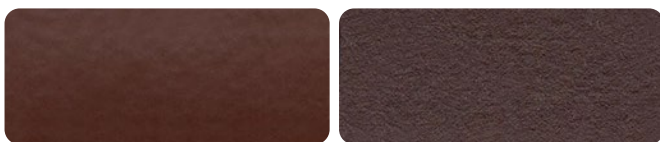
DW-PURPLE



DW-YELLOW



DW-ORANGE



DW-BROWN



DW-LIGHT BROWN



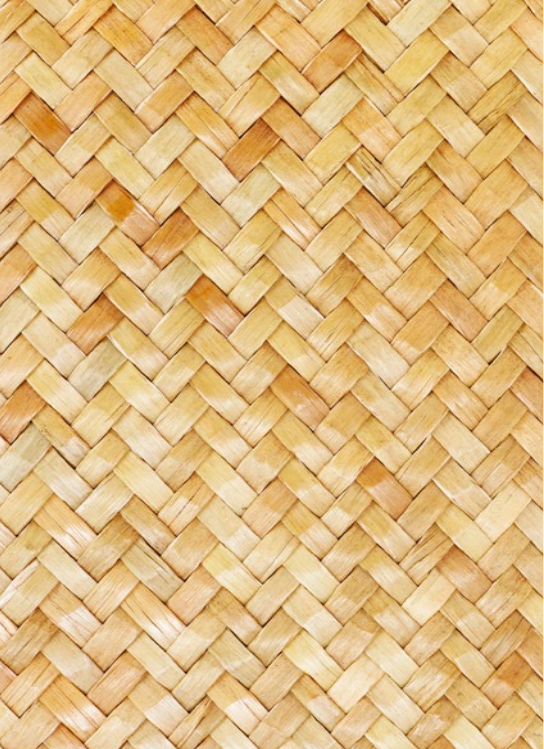
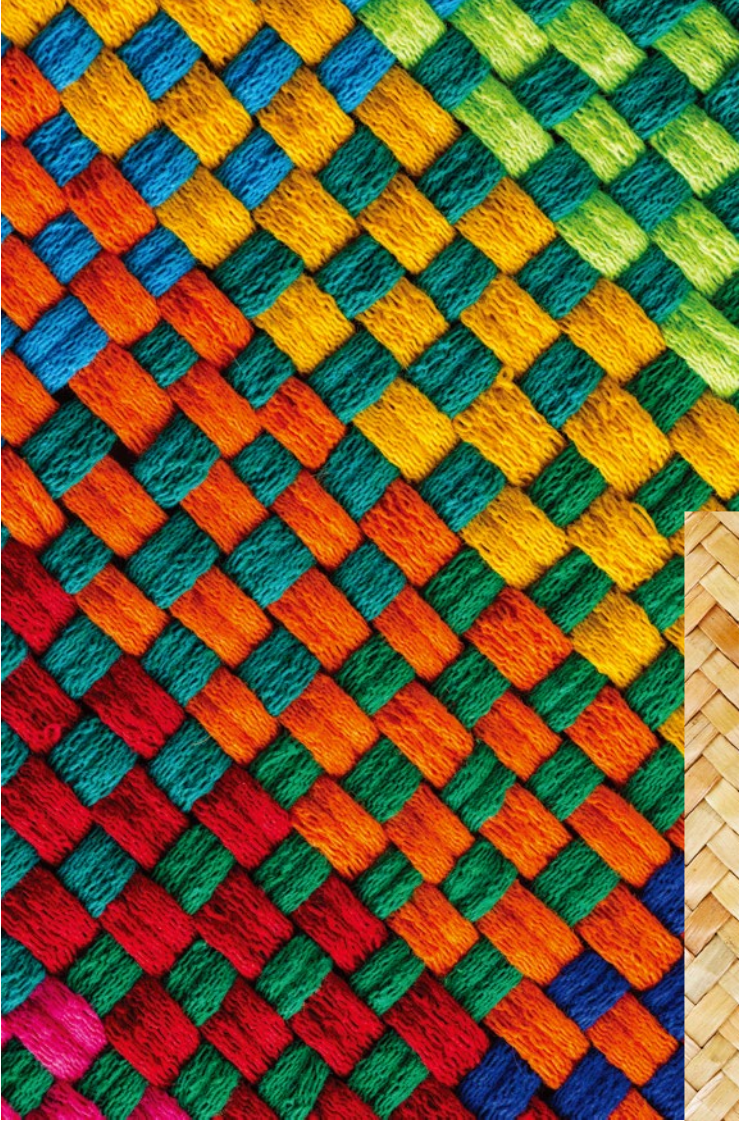
DW-PINK

# Collaboration



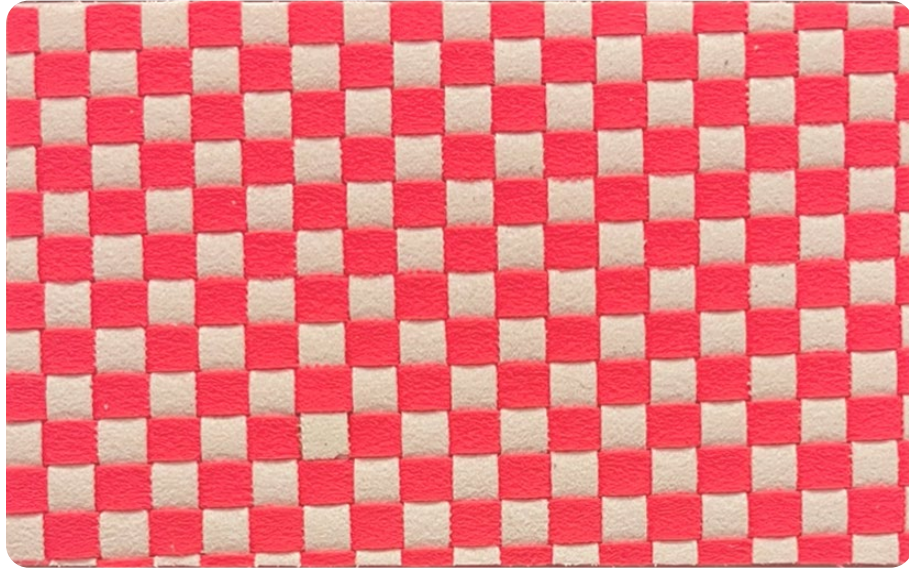


# FW2026 Collection

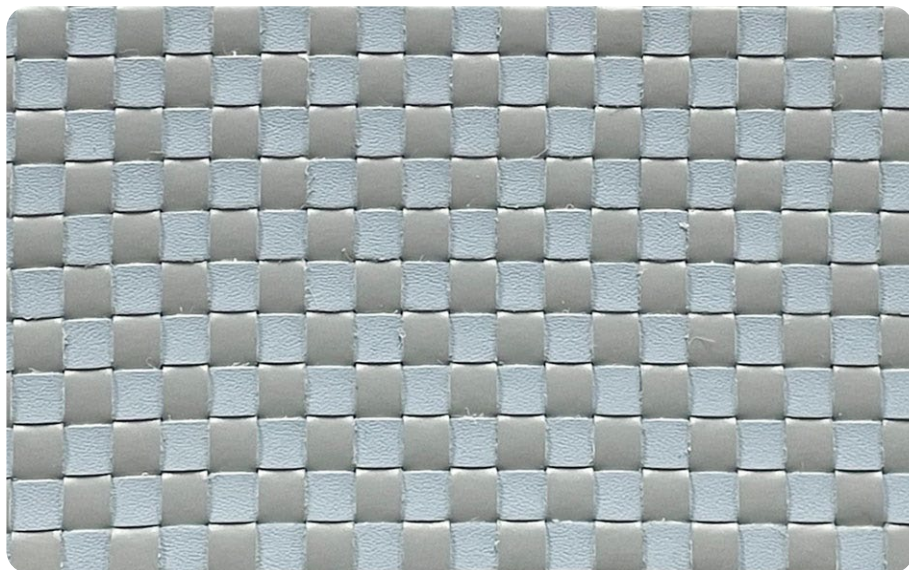




## SUEDE 2 LAYER



## PU SYN 2 LAYER



- Double Layer Criss-Cross Pattern
- Multi-color pattern, Single color Pattern
- Base Material: PU Synthetic or PU Suede



# DAEWON ECO SUEDE

SUEDE

**DAEWON**

# DAEWON Collection

## LETO 0.8MM

TEAR STRENGTH		TENSILE STRENGTH		MARTINDALE ABRASION	MIGRATION FASTNESS	CEMENTATION TEST
A	B	A	B			
34.0	43.0	191.0	125.0	MIN 50000 cycles	4	3.6-3.8

## SNOW 0.8MM

TEAR STRENGTH		TENSILE STRENGTH		MARTINDALE ABRASION	MIGRATION FASTNESS	CEMENTATION TEST
A	B	A	B			
36.0	42.0	176.0	138.0	MIN 50000 cycles	4-5	3.6-3.9

## LETO MF 0.8MM

TEAR STRENGTH		TENSILE STRENGTH		MARTINDALE ABRASION	MIGRATION FASTNESS	CEMENTATION TEST
A	B	A	B			
32.0	38.0	117.0	147.0	MIN 50000 cycles	4.0	3.7-3.8

## SNOW MF 0.8MM

TEAR STRENGTH		TENSILE STRENGTH		MARTINDALE ABRASION	MIGRATION FASTNESS	CEMENTATION TEST
A	B	A	B			
31.0	37.0	138.0	103.0	MIN 50000 cycles	4-5	3.7

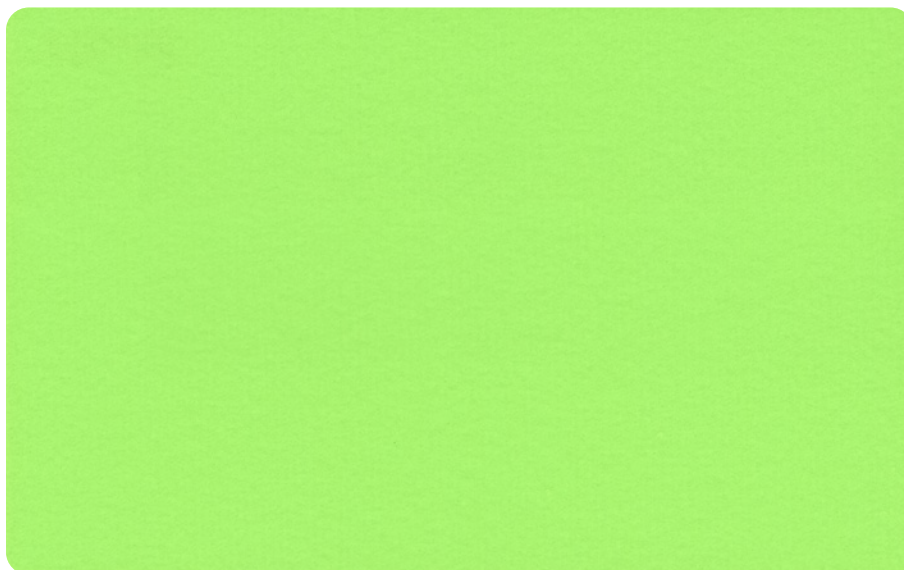
## FULLEN 0.8MM

TEAR STRENGTH		TENSILE STRENGTH		MARTINDALE ABRASION	MIGRATION FASTNESS	CEMENTATION TEST
A	B	A	B			
33.0	40.0	142.0	123.0	MIN 50000 cycles	4-5	3.6-3.9





## LETO



COMP : 79% Polyester, 21% PU

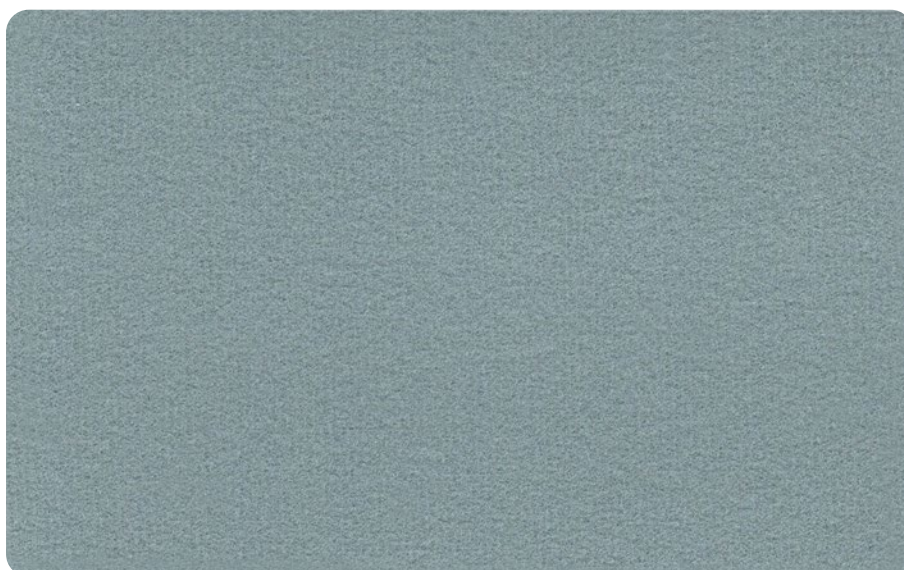
SPEC : 0.8mm

WEIGHT: 310.30g/sqmt

Available Thickness: 0.8mm, 1.0mm, 1.2mm

- Eco friendly and DMFa Free with superior color resolution.
- High soft & smooth surface feeling.
- Less colorfastness, High bonding backer for No-sew application.

## SNOW



COMP : 26% PU, 74% Recycle Polyester

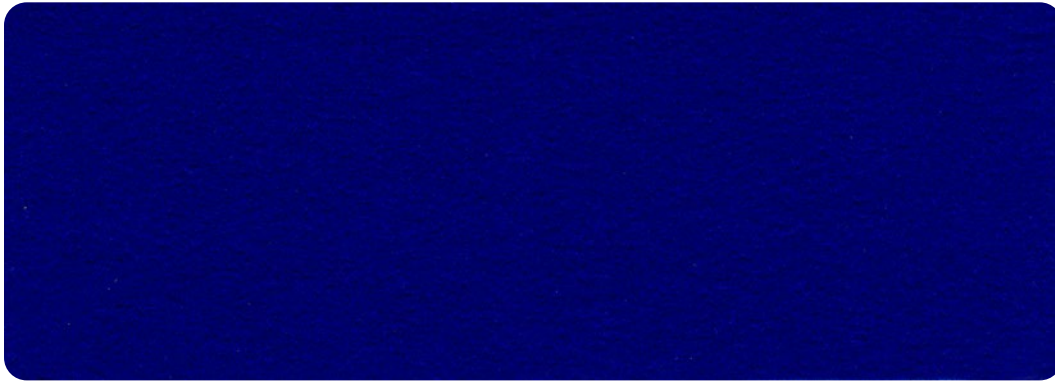
SPEC : 0.8mm

WEIGHT: 281g/sqmt

Available Thickness: 0.8mm, 1.0mm, 1.2mm

- Supreme Soft, Eco friendly - DMFa Free.
- Superior color resolution, soft & smooth surface feeling.
- Low colorfastness and high bonding (backer) for No-sew application.

## LETO MF



COMP : 77% Polyester, 23% PU      SPEC : 0.8mm      WEIGHT: 271.23g/sqmt

Available Thickness: 0.6mm, 0.8mm, 1.0mm, 1.2mm

- Eco friendly and DMFa Free with superior color resolution.
- Less colorfastness, High bonding backer for No-sew application.

## SNOW MF



COMP : 90% Polyester, 10% PU      SPEC : 0.8mm      WEIGHT: 268.20g/sqmt

Available Thickness: 0.6mm, 0.8mm, 1.0mm, 1.2mm

- Supreme soft, Eco friendly - DMFa Free, superior color resolution
- Less colorfastness, very high bonding (backer) with No-sew application.

## FULLEN



COMP : 23% PU, 77% Recycle Polyester      SPEC : 0.8mm      WEIGHT: 280.30g/sqmt

Available Thickness: 0.4mm, 0.6mm, 0.8mm, 1.0mm, 1.2mm

- Eco Friendly Mircrofiber suede developed to give real-leather suede feel
- Less colorfastness, High bonding backer for No-sew application.





**DAEWON**





# DAEWON PU SKIN TPU



DAEWON

PU SKIN

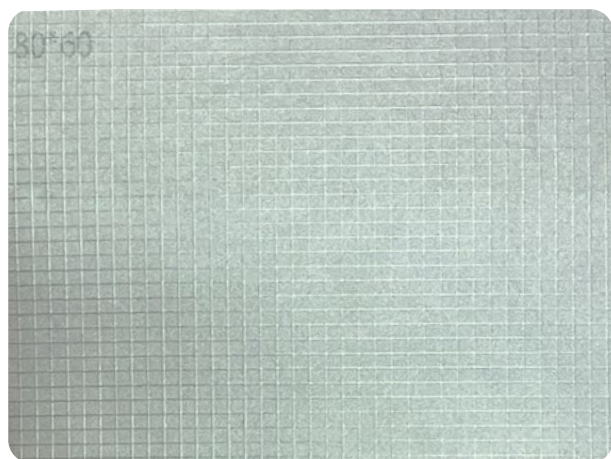


# DAEWON Collection

## ELAN SERIES

- Optimized to Fuse & No-sew process.
- High bonding, less curling and shrinkage.
- No bubble issue, solid and translucent color, softness.
- Color consistency, less overflow.
- Variety of release papers and effects application.

### ELAN 2S



RIP STOP



DE-125

COMP : 40% PU, 60% HMF

SPEC : 0.3mm

WEIGHT: 361.20g/sqmt

Available Thickness: 0.18mm, 0.22mm, 0.25mm, 0.28mm, 0.3mm, 0.35mm

#### ELAN 2S 0.3MM

TEAR STRENGTH		TENSILE STRENGTH		MARTINDALE ABRASION	MIGRATION FASTNESS	CEMENTATION TEST
A	B	A	B			
24.0	23.0	57.0	51.0	1300 cycles	4-5	3.7

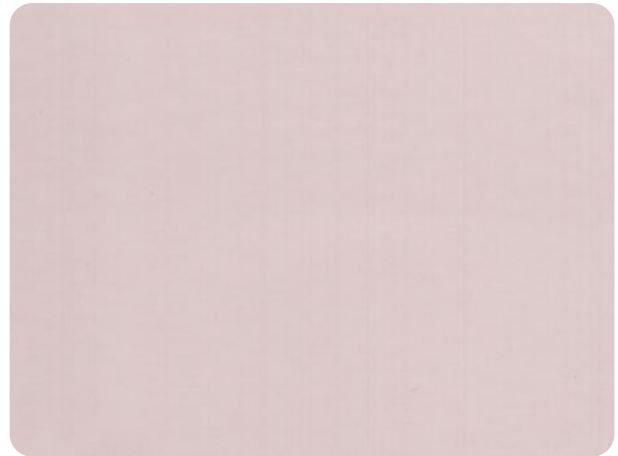


# ELAN 3S

Available Thickness: 0.4mm, 0.5mm 0.6mm, 0.7mm, 0.8mm, 0.9mm, 1.0mm



UMT



UMT

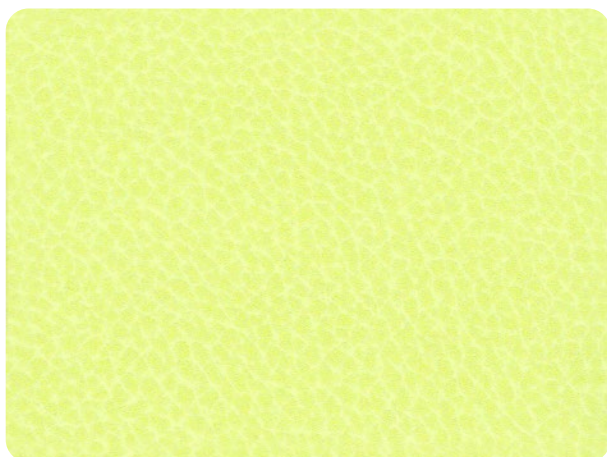
COMP : 35% PU, 65% TPU

SPEC : 0.5mm

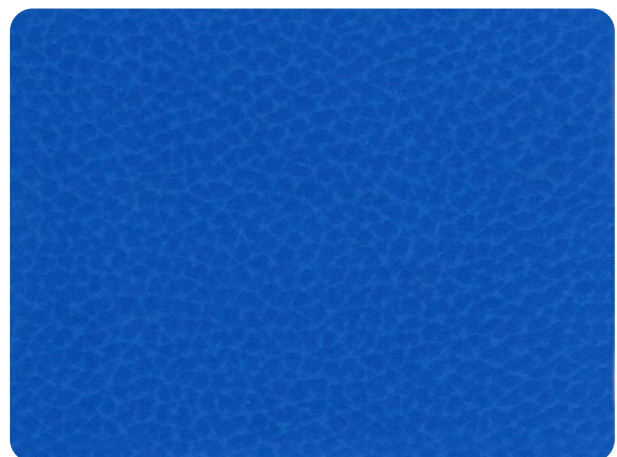
WEIGHT: 620g/sqmt

## ELAN 3S 0.5MM

TEAR STRENGTH		TENSILE STRENGTH		MARTINDALE ABRASION	MIGRATION FASTNESS	CEMENTATION TEST
A	B	A	B			
33.0	31.0	97.0	91.0	1300 cycles	4-5	3.8



UM-34SM



UM-34SM

COMP : 20% PU, 80% TPU

SPEC : 0.7mm

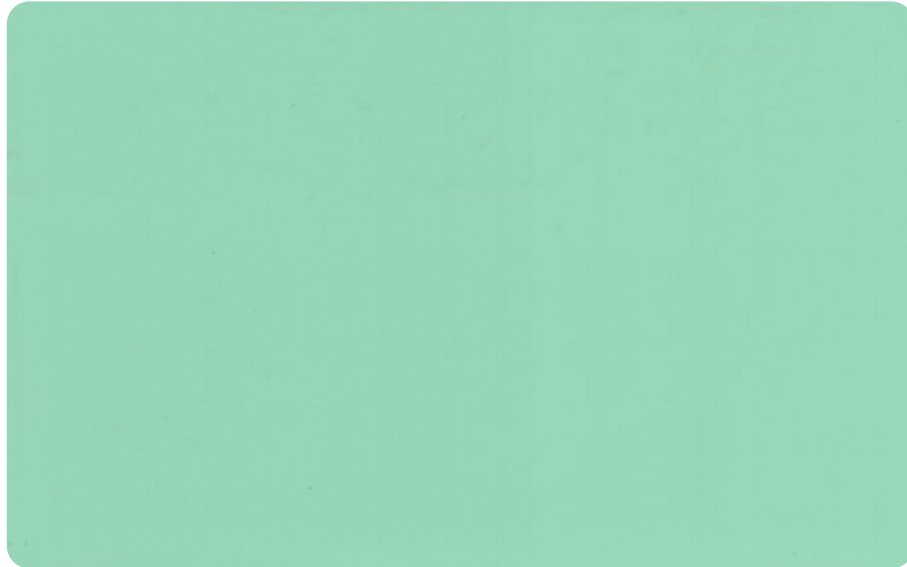
WEIGHT: 818.90g/sqmt

## ELAN 3S 0.7MM

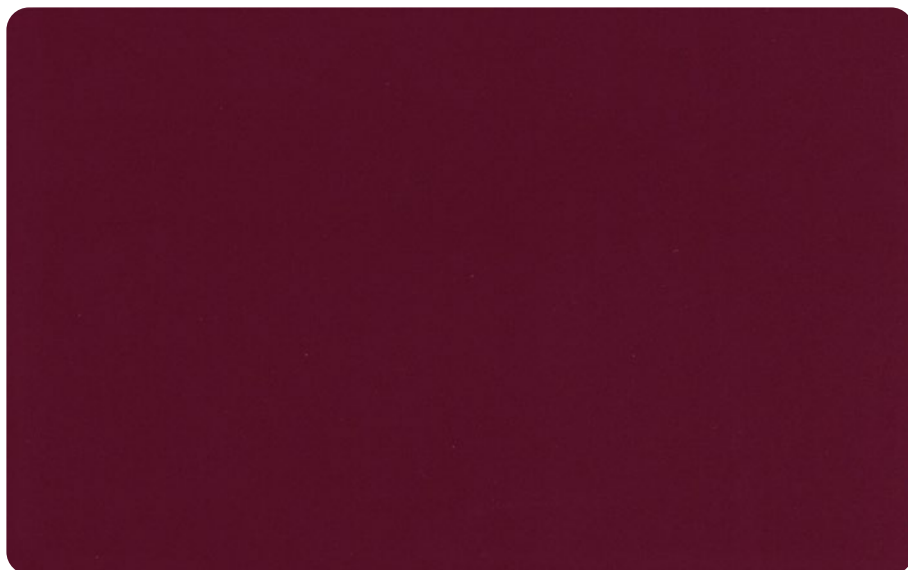
TEAR STRENGTH		TENSILE STRENGTH		MARTINDALE ABRASION	MIGRATION FASTNESS	CEMENTATION TEST
A	B	A	B			
43.0	42.0	134.0	138.0	1300 cycles	4-5	3.8



## VEIL SKIN LITE HMF



S-MATTE



R-131M

COMP : 60% PU, 40% TPU

SPEC : 0.65mm

WEIGHT: 538.93g/sqmt

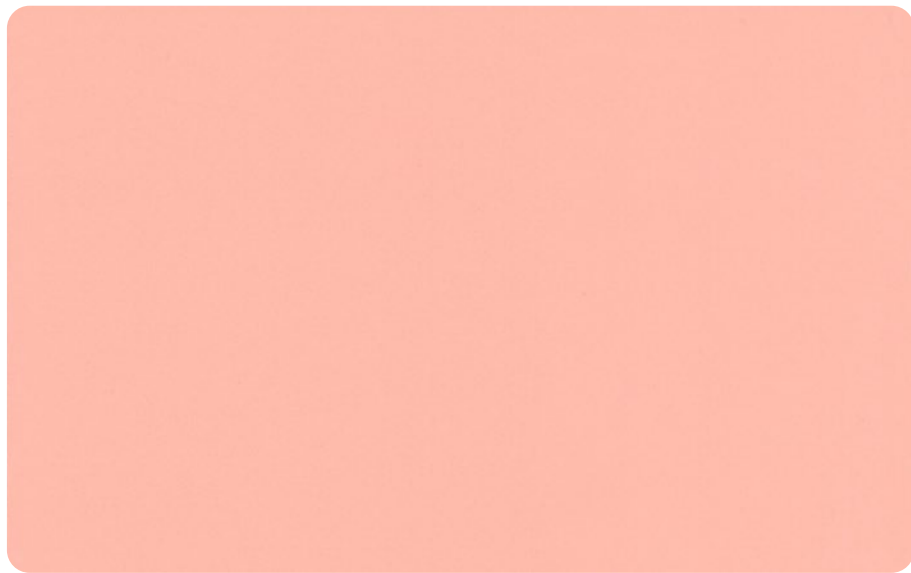
Available Thickness: 0.45mm, 0.55mm, 0.6mm, 0.65mm, 0.7mm, 0.75mm

- All RP Available, high bonding, backing dyethrough.
- Soft & smooth surface feeling.
- No-sew application.
- Stretchable product.

### VEIL SKIN LITE HMF 0.65MM

TEAR STRENGTH		TENSILE STRENGTH		MARTINDALE ABRASION	MIGRATION FASTNESS	CEMENTATION TEST
A	B	A	B			
N/A	N/A	61.0	57.0	N/A	4-5	4.5

## VEIL SKIN BUCK HMF



COMP : 45% PU, 55% TPU

SPEC : 0.6mm

WEIGHT: 437.80g/sqmt

Available Thickness: 0.55mm, 0.6mm, 0.65mm, 0.7mm, 0.75mm

- Real nu-buck feeling touch, high bonding, backing dyethrough.
- Soft & smooth surface feeling.
- No-sew application.
- Stretchable product.

### VEIL SKIN BUCK HMF 0.6MM

TEAR STRENGTH		TENSILE STRENGTH		MARTINDALE ABRASION	MIGRATION FASTNESS	CEMENTATION TEST
A	B	A	B			
N/A	N/A	55.0	52.0	N/A	4-5	4.7



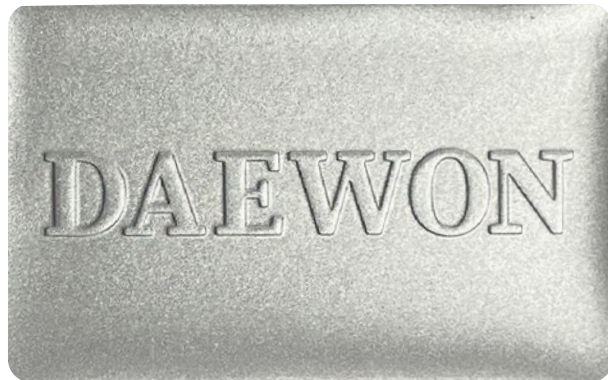


# DAEWON Collection

## TRISHA



DE-125SM



COMP : 10% PU, 90% TPU

SPEC : 0.6mm

WEIGHT: 686.80g/sqmt

Available Thickness: 0.6mm, 1.1mm

- TPU for High Frequency cutting and welding.

### TRISHA 0.6MM

TENSILE STRENGTH		ELONGATION		TONGUE TEAR	MULLEN BURST	ABRASION STOLL	PLY ADHESION
A	B	A	B				
27.9	27.3	690	690	N/A	N/A	800	3.7



**DAEWON  
PU SYN**

**DAEWON**

**PU SYN**



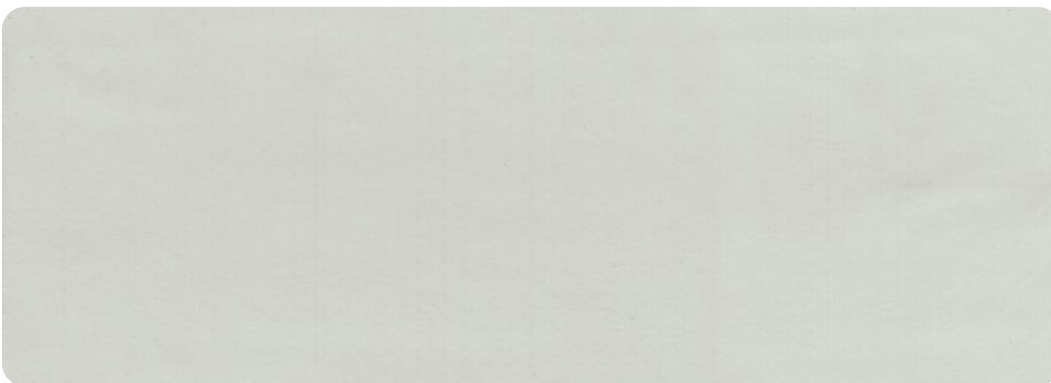


# DAEWON Collection

## Q-NIX

- Real leather feeling touch, softness, high bonding.
- Microfiber backing (backing color: White and Black).

### Q-NIX 0.7MM



S-MATTE

COMP : 70% Nylon, 30 % PU

SPEC : 0.7mm

WEIGHT: 358g/sqmt

TEAR STRENGTH		TENSILE STRENGTH		MARTINDALE ABRASION	MIGRATION FASTNESS	CEMENTATION TEST
A	B	A	B			
41.0	39.0	115.0	97.0	MIN 50000 cycles	4-5	3.1



# Q-NIX 1.2MM



DE-43S

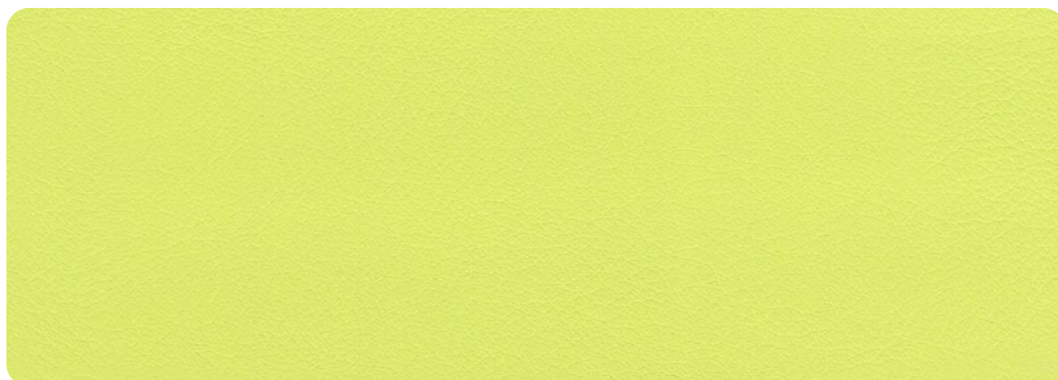
COMP : 40% Nylon, 60% PU

SPEC : 1.2mm

WEIGHT: 652g/sqmt

TEAR STRENGTH		TENSILE STRENGTH		MARTINDALE ABRASION	MIGRATION FASTNESS	CEMENTATION TEST
A	B	A	B			
78.0	85.0	215.0	174.0	MIN 50000 cycles	4-5	4.4

# Q-NIX 1.4MM



DE-41SG

COMP : 40% Nylon, 60% PU

SPEC : 1.4mm

WEIGHT: 686g/sqmt

TEAR STRENGTH		TENSILE STRENGTH		MARTINDALE ABRASION	MIGRATION FASTNESS	CEMENTATION TEST
A	B	A	B			
78.0	85.0	226.0	186.0	MIN 50000 cycles	4-5	4.6

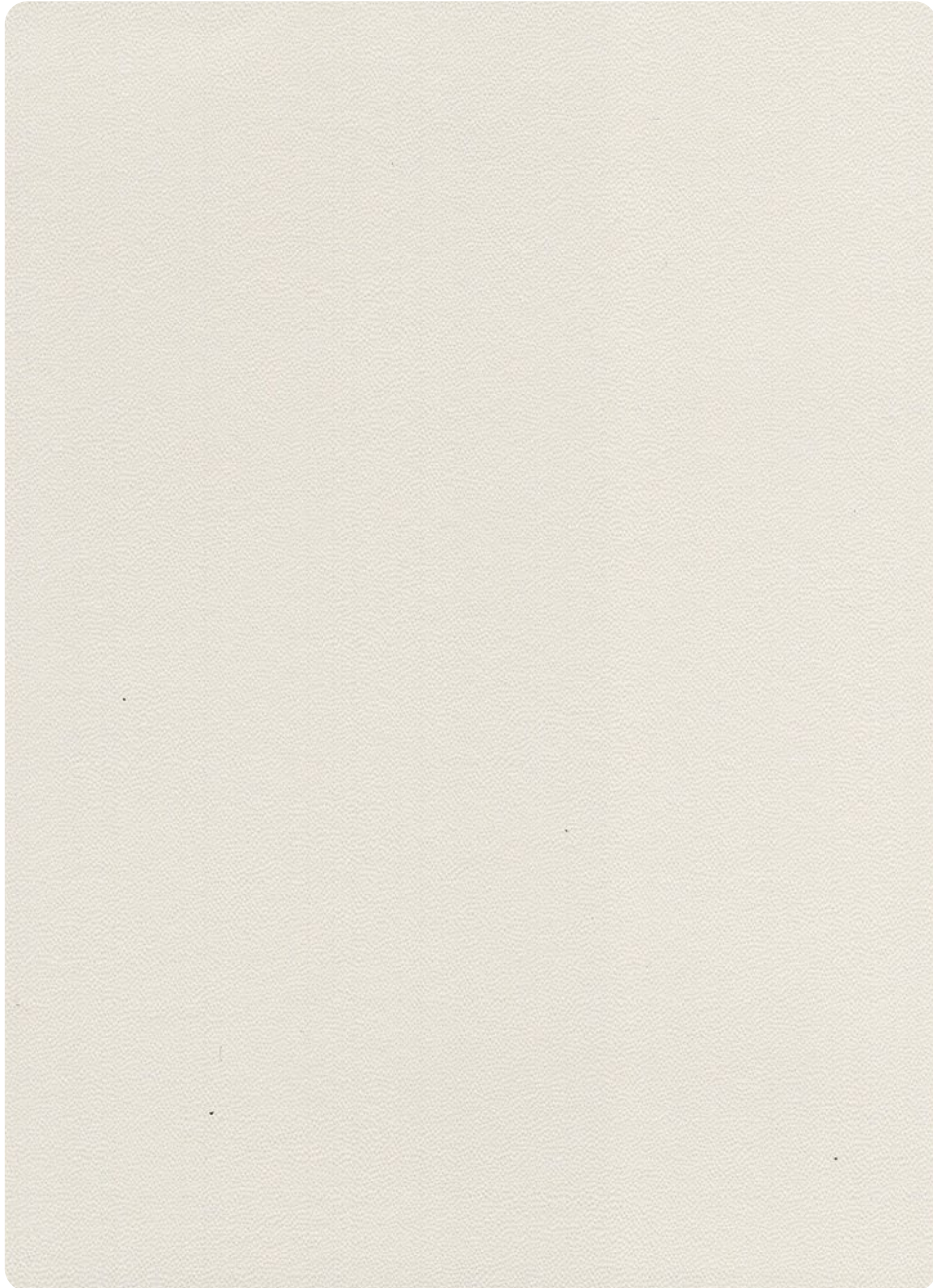


# DAEWON Collection

## FREESIA 0.8MM

TEAR STRENGTH		TENSILE STRENGTH		MARTINDALE ABRASION	MIGRATION FASTNESS	CEMENTATION TEST
A	B	A	B			
44.0	42.0	114.0	78.0	MIN 50000 cycles	4-5	2.9

# FREESIA



R-8M

COMP : 40% PU, 60% Recycle Polyester

SPEC : 0.8mm

WEIGHT: 329g/sqmt

Available Thickness: 0.6mm, 0.8mm, 1.0mm, 1.2mm, 1.4mm

- PU coated Non woven fabric base.
- Light-Weight, visible reinforcement item,



# DAEWON Collection

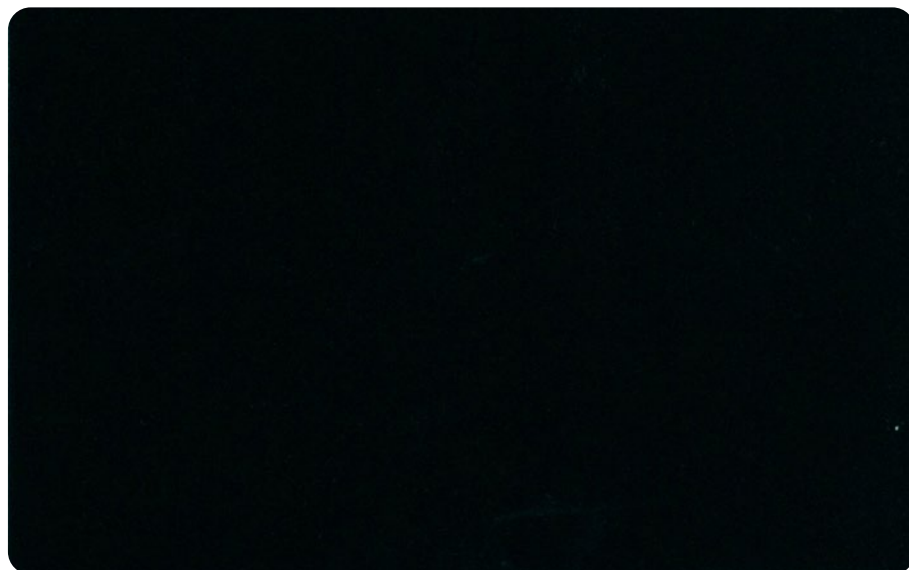
## TREE VEGAN 1.2MM

TEAR STRENGTH		TENSILE STRENGTH		MARTINDALE ABRASION	MIGRATION FASTNESS	CEMENTATION TEST
A	B	A	B			
71.0	78.0	132.0	123.0	MIN 50000 cycles	4-5	4.2

# TREE VEGAN



ESSENZA



R-231M

COMP : 45% PU, 55% Recycle Polyester

SPEC : 1.2mm

WEIGHT: 496g/sqmt

Available Thickness: 0.8mm, 1.0mm, 1.2mm

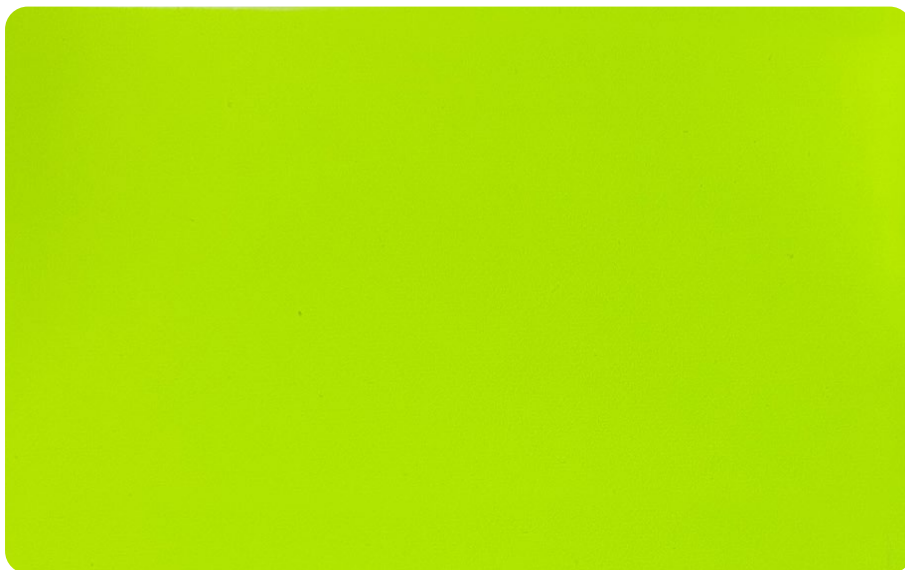
- Real leather feeling touch, softness.
- High bonding, good backer bonding with no-sew application.
- Light-Weight, Color Migration Free.
- Solvent Free.



# DAEWON Collection

- Lightweight, breathable, stretchable and cushioned, softness.
- Lining parts are highly recommended. Suitable low bonding inquire area.
- Competitive price.
- 2 backing color: White and Black.

## NEW LITE



R-131M

COMP : 65% Polyester, 35% PU

SPEC : 0.8mm

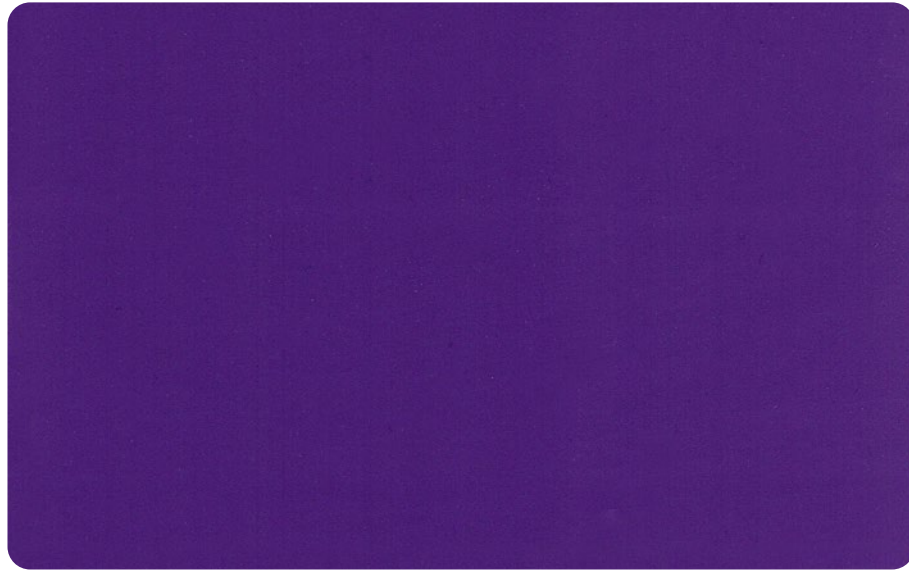
WEIGHT: 296g/sqmt

## NEW LITE 0.8MM

TEAR STRENGTH		TENSILE STRENGTH		MARTINDALE ABRASION	MIGRATION FASTNESS	CEMENTATION TEST
A	B	A	B			
42.0	42.0	174.0	105.0	MIN 50000 cycles	4.0	3.8



# MATE



SWAN

COMP : 40% Polyester, 60% PU

SPEC : 0.6mm

WEIGHT: 245g/sqmt

## MATE 0.6MM

TEAR STRENGTH		TENSILE STRENGTH		MARTINDALE ABRASION	MIGRATION FASTNESS	CEMENTATION TEST
A	B	A	B			
20.0	35.0	8.0	19.0	MIN 50000 cycles	3-4	1.2



Thank You for reading our Catalog  
For further Inquires, you can contact us as below:

**Korea**

Sue    sue@daewon21.co.kr

**Vietnam**

Steve    steve.yeam@daewon21.co.kr

Emas    emas.kang@daewon21.co.kr

**Indonesia**

Joe    joe@daewon21.co.kr



[www.daewon21.vn](http://www.daewon21.vn)



[@daewonvinaytb](https://www.youtube.com/@daewonvinaytb)





 **DAEWON CHEMICAL VINA CO., LTD.**

**Korea - Headquarter**

868-14, Gyeonggi-daero, Osan-si, Gyeonggi-do, Korea  
Tel: 82-31-372-3992  
Fax: 82-31-372-3995

**Korea - Busan Business Office**

12-201-1, 76, Yutongdangil-ro, Gangseo-gu,  
Busan, Korea  
Tel: 82-51-832-5037  
Fax: 82-51-832-5041

**Vietnam - DAEWON VINA**

5 Road, Long Thanh Industrial Zone, Long Thanh Dist,  
Dong Nai Province, Vietnam  
Tel: 84-61-3514-270  
Fax: 84-61-3514-271

**China - Business Office (Dong Guan)**

Opposite of Pingsha Primary School,  
26th of Pingsha East Street, Junha, Baiyun District,  
GuangZhou, China  
Tel: 86-20-2284-3415

**Taiwan - Business Office (Tai Chung)**

5F-8, No. 378, Sec 1, Wenxin Road, Nantun Dist.,  
Taichung City 40862, Taiwan  
TEL : 886-4-2320-5208

**PT. DAEWON ECO INDONESIA**

JL Pinang Blok F23 No.11E & 11F,  
Delta Silicon 3 Lippo Cikarang, Cicau, Cikarang Pusat,  
Dekasi, Indonesia  
Tel: 62-21-8992-3000